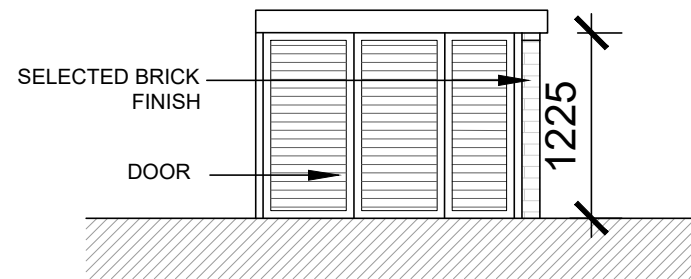
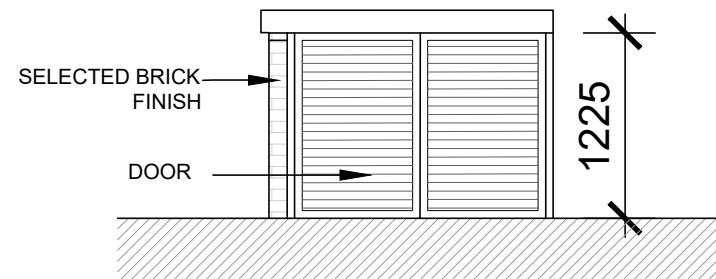


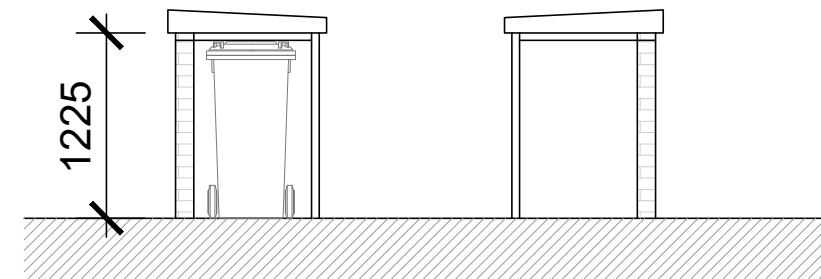
DO NOT SCALE. WORK TO FIGURED DIMENSIONS ONLY.
 ALL EXISTING DIMENSIONS TO BE CHECKED ON SITE.
 DRAWN ON AUTOCAD R2004 AT DEADY GAHAN ARCHITECTS LTD
 LAYERS ON THIS DRAWING COMPLY WITH BS 1192: PART 5



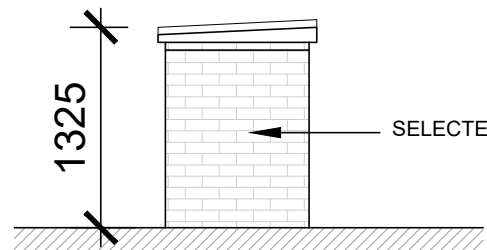
● FRONT ELEVATION (BIN STORE)
 SCALE 1:50 @ A3



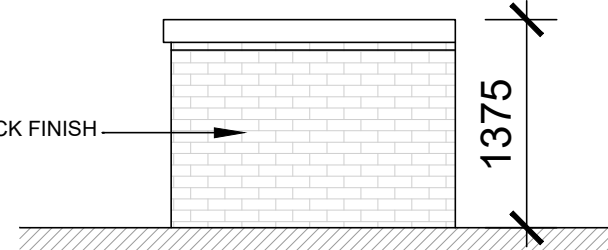
● FRONT ELEVATION (BIKE STORE)
 SCALE 1:50 @ A3



SECTION A-A
 SCALE 1:50 @ A3



SIDE ELEVATIONS (BIN & BIKE STORE)
 SCALE 1:50 @ A3



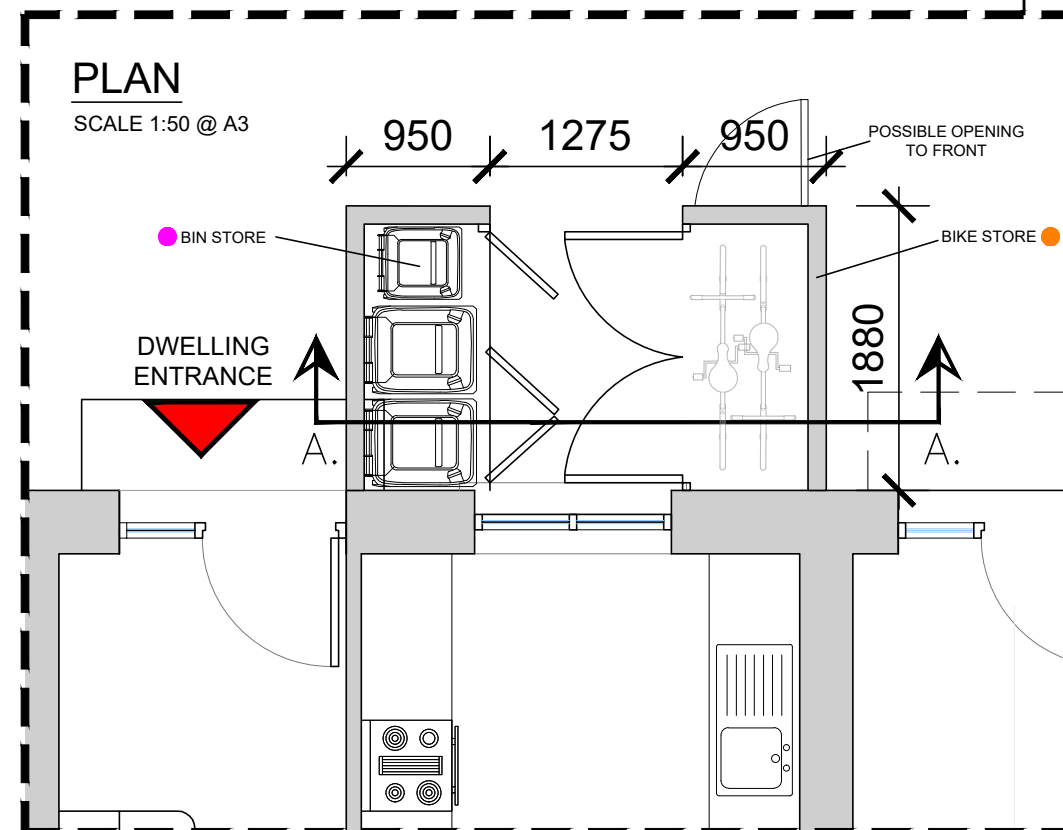
REAR ELEVATION (BIN & BIKE STORE)
 SCALE 1:50 @ A3



Key Plan
 NTS @ A3

MID TOWNHOUSE UNITS BIN & BIKE PARKING SCHEDULE	
BIN STORE SCHEDULE	
2 Bed Mid Townhouse Units 3 Bin System required for each unit <i>*Semi-Detached & End Townhouse units have direct access to allocated GF private amenity space and can utilise this for bin storage.</i>	
●	3 Bin System for each Unit
BIKE STORE SCHEDULE	
2 Bed Mid Townhouse Units (1 space per bedroom) - 78no. bike spaces required <i>*Semi-Detached & End Townhouse units have direct access to allocated GF private amenity space and can utilise this for bike storage.</i>	
●	39no X 2no. spaces (Secure)
**Meets standards set out in the 'Sustainable and Compact Settlements' Guidelines 2024 for bike storage	
TOTAL BIKE PARKING PROVIDED = 78no.	

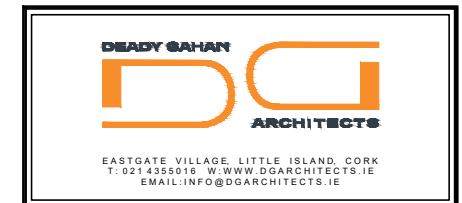
Note: Please refer to Site Plan drawing no. 21175/P/003 for orientation



PLAN

SCALE 1:50 @ A3

date	rev	name	chk	note
18.06.25	P1	LM	EJG	ISSUE FOR PLANNING



Project
 PROPOSED RESIDENTIAL DEVELOPMENT
 AT LEHENAGHMORE,
 CO. CORK.

Drawing title
 MID TOWNHOUSE BIN & BIKE STORE

Scale 1:25 @ A3	Drawn LM	Checked EJG	Date 01.07.24
Project No. 21175	Dwg. No. 21175/P/009A	Revision P1	
Information / Comments			Tender
Planning			Construction